



Data sheet DLoG ITC 7



Features

The DLoG ITC7 comes with features such as:

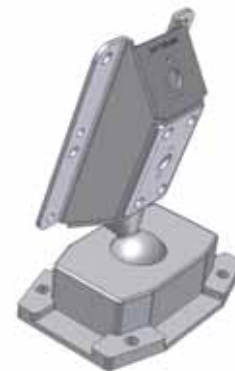
Service-lid (CF & USB)
New cable-cover design



New design
(only 70mm)



Mounting Brackets by DLoG



DLoG ITC 7 is a further development of the DLoG product family. It is an industrial PC, supporting the lowest TCO - for use in production, shop floor application, visualisation and many more areas – whenever it's important for long-term, reliable function in rugged environments. With its 15" touch screen the DLoG ITC 7 is the ideal candidate for user friendly work within an harsh environment.



Specifications DLoG ITC 7

Housing		Coated Aluminium
	Dimensions	12.8" x 15.6" x 2.8" / 326 mm x 395 mm x 70 mm
	Weight	6 kg
Display		Color-TFT, 15", XGA, 1024 x 768
Touch screen		DLoG specific resistive touch screen
System properties		
	CPU	Intel® Celeron® M 1GHz Ultra Low Voltage
	Chipset	Intel® chipset
	Memory	512 MB up to 1 GB DDR2
	Easy access USB	Easy accessible through and protected by Service-Lid
Software		
	Operating systems	MS® Windows® XP Professional, XP Embedded; Linux on request
	Emulations	VT100, VT220, IBM 5250, TN 3270 Citrix Client® Freefloat Access One
Mass storage		
	CF card	Type I/II up to 16 GByte
	Hard disk drive	Industrial HDD: 20 GByte, other capacities on request
Interfaces		
	Serial	2 RS232 interfaces Optional, COM 1: 5 V
	USB	2 interfaces USB 2.0 (HI-SPEED™) compatible
	Keyboard / Mouse	PS/2 interface
Network connection		
	LAN	Ethernet 10/100 MBit/s
Power supply		
	AC	110/230 VAC
Environmental conditions		
	Protection class	IP 54
	Certificates	CE
	Operating temperature	32 °F to 122 °F / 0 °C to +50 °
	Storage temperature	32 °F to 122 °F / 0 °C to +50 °
	Relative humidity	10% to 90% at 104 °F / 40 °C, non condensing
	Vibration/Shock	Class 5M1 according to EN 60721-3-5

Highlights

Flat design: Only as thin as 70mm with a big 15" Touch Display.

Brightness control: Via integrated front keys

Easy Access USB: Allows easy access to an additional USB port, in cases of SW updates for instance.

DLoG Config Tool: Diagnostics and individual configuration of the Client

Environmental conditions: DLoG terminals are proven by individual labs to keep the promises this datasheet makes.

Information in this document is subject to change without prior notice. The software and hardware designations used in this text are in most cases also registered trademarks and are thus subject to law.

© by DLoG GmbH 2008

DLoG GmbH

Werner-von-Siemens-Str. 13
D-82140 Olching
Phone: +49 81 42 / 28 60-0
Fax: +49 81 42 / 28 60-10
E-Mail: info@dlog.com
Internet: www.dlog.com